

The following section consists of video files that can be used for visual smoke detection.

Special feature of these video files is that for each scene the information about camera intrinsic and extrinsic parameters is also stored in the same zip archive. All videos were recorded using "Sony HDR-CX105E" video camera.

Video file properties:

Width: 1200
Height: 676
Framerate: 25 frames/second
No audio

Some portion of these videos among others were used in the article titled

"Adaptive Estimation of Visual Smoke Detection Parameters Based on Spatial Data and Fire Risk Index "

Marin Bugarić, Toni Jakovčević, Darko Stipaničev

DOI: 10.1016/j.cviu.2013.10.003

Available online from 18 October 2013, ISSN 1077-3142

Free access to this article until 26th March 2014 on link <http://elsarticle.com/1ejF8LW>

After this date regular access to article <http://www.sciencedirect.com/science/article/pii/S1077314213001860>

Important note: ***These videos are free to use, but if you intend to use them in scientific research, it is necessary to reference the aforementioned article:***

Bugarić, Marin; Jakovčević, Toni; Stipaničev, Darko. **Adaptive estimation of visual smoke detection parameters based on spatial data and fire risk index**

,
Computer Vision and Image Understanding,

118

(2014), 184-196, dx.doi.org/10.1016/j.cviu.2013.10.003

Videos:

[Link to the videos](#) (shared google drive folder)

Direct links:

Video 1: <https://drive.google.com/uc?id=0B8dXLChT6WLLbGFfQmlMVDBxUIE&export=download>

Video 2: <https://drive.google.com/uc?id=0B8dXLChT6WLLcjFGVnRQLU1jcHM&export=download>

Video 3: <https://drive.google.com/uc?id=0B8dXLChT6WLLeDdwT0lqRE5veE0&export=download>

Video 4: <https://drive.google.com/uc?id=0B8dXLChT6WLLT1Y5dFFGZTIlbjg&export=download>

Video 5: <https://drive.google.com/uc?id=0B8dXLChT6WLLRI9RQzI6RThJTUU&export=download>

Video 6: <https://drive.google.com/uc?id=0B8dXLChT6WLLamgxRmI2bHE5YU0&export=download>

Video 7: <https://drive.google.com/uc?id=0B8dXLChT6WLLYIRtTIRpZW1sN0k&export=download>

Video 8: <https://drive.google.com/uc?id=0B8dXLChT6WLLaG0wT3Mzb1BtYIU&export=download>

Video 9: <https://drive.google.com/uc?id=0B8dXLChT6WLLNEtNa0NLTXU2dHM&export=download>

Video 10: <https://drive.google.com/uc?id=0B8dXLChT6WLLV0pBVHFTOUiHbW8&export=download>

[=download](#)

Contents of ".cpr" file:

X coordinate in EPSG:900913

Y coordinate in EPSG:900913

Terrain height

Intrinsic [0]

Intrinsic [1]

Intrinsic [2]

Intrinsic [3]

Intrinsic [4]

Intrinsic [5]

Intrinsic [6]

Intrinsic [7]

Intrinsic [8]

Pan

Tilt

Roll

Vertical exaggeration

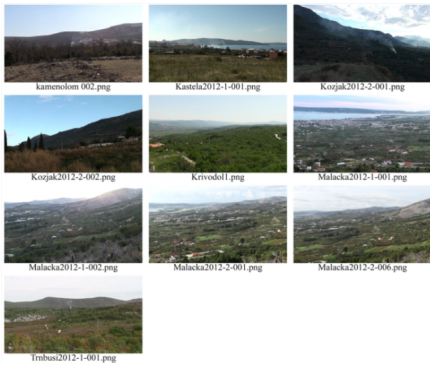
Camera height

Pixel Coverage map, depth map and micro location fire risk index map for all the videos can be found at the following address:

[Spatial and fire risk data](#)

The explanation of how to generate spatial and fire risk data is given in the article "Adaptive estimation of visual smoke detection parameters based on spatial data and fire risk index".

Screenshots:



-->

//